

Abdominal Stereotactic Body Radiotherapy: Local Control and Correlation to Biologically Equivalent Dose

Simon Kirste¹, Hans Trautsch¹, Marc-Benjamin Messmer¹, Rolf Wiehle¹, Hans-Christian Rischke¹, Felix Momm², Anca-Ligia Grosu¹ and Thomas B. Brunner^{1*}

Abstract

Aim: We conducted a retrospective study to report on the outcome and toxicity of stereotactic body radiotherapy (SBRT) and to analyze the correlation of local control (LC) and We conducted to analyze S04esions wit1g4(r f77 g)To rep with(BEDe Sr comple tðdictive /C2stract

Keywords:

Introduction

1. Introduction
2. Materials and Methods
3. Results
4. Discussion
5. Conclusion

11,12
13
5
14,15

Citation: Sät•c^ÁÜÉÁV:æ~c•&@ÁPÉÁ T^•• { ^:Á TÓÉÁ Yá^@|ÁÜÉÜá•&@\^Á PÓÉÁ ^cáæ|ÉÁ

Citation:

Úæá^}c P [É	Primary	Lesion Location	Lesion size (max. Tumor diameter)	ÚVXÁç [[^Á (ccm)	Fractionation regimen	Prescribed EQD2 ÇÓ^D	ÚVXÉ encompassing ÓÚÓGÁçÓ^D	Time to local Progression (months)
1	ÞÚÓŠÓ	Adrenal gland	22 mm	77.77	JÁ ÁTÁÖ^	1G	HÉÍ	1.5
2	CRC	Liver	GÍÁ { {	15.70	ÍÁ ÁTÁÖ^	1E	31.3	2.2
3	CRC	Liver	HÍÁ { {	ÍÍÉFÍ	TÁ ÁTÁÖ^	IHEÍÍ	HÍÉÍ	IEÍ
1	CRC	Liver	32 mm	HÉÉÍ	ÍÁ ÁTÁÖ^	IJEÍ	ÍHEÍ	5.5
5	CRC	Liver	HÍÁ { {	íÉÉÍ	ÍÁ ÁTÁÖ^	IJEÍ	GHÉÍ	7.2
1	CCC	Liver	IÍÁ { {	JÍÉÍ	FÉÁ ÁTÁÖ^	IÍÉÍ	IHEÍ	12.0
7	CRC	Liver	FÍÁ { {	FÍÉÍ	ÍÁ ÁTÁÖ^	IJEÍ	HÍÉÍ	FÍÉJ

ÞÚÓŠÓKÁÞ []ÉÜ { æ|ÁÖ^|ÍŠ^ } *ÁÓæ} &^ÉÍÓÚÓKÁÓ [| [^&cæ|ÁÖæ } &^ÉÍÓÓÓKÁÓ @ []æ } *á [&^|] ^æ|ÁÖæ: &á } [{ æ|Áæ } @æNBLa^cæNÁ:æcá [Á, æ•Kæ•• { ^Ááç [ÁÁ^FÉÉ

Table 2: KÓ^cæj •- [|Á] æcá^ } c•Kæ } á|Á^á [] •Á, áç@Á [&æ|Á-æj] ^Áçj } É, ^|áÁ [] [*|Á••á [] DÉ

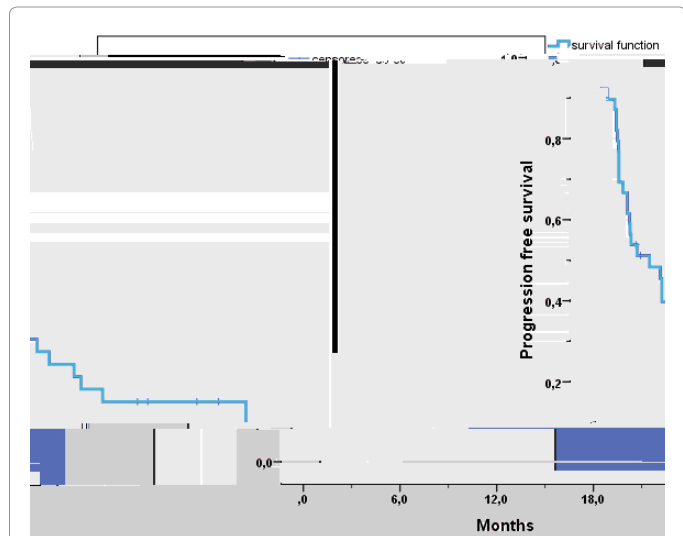


Figure 3: KÓ^cæj •- [|Á] æcá^ } c•Kæ } á|Á^á [] •Á, áç@Á [&æ|Á-æj] ^Áçj } É, ^|áÁ [] [*|Á••á [] DÉ

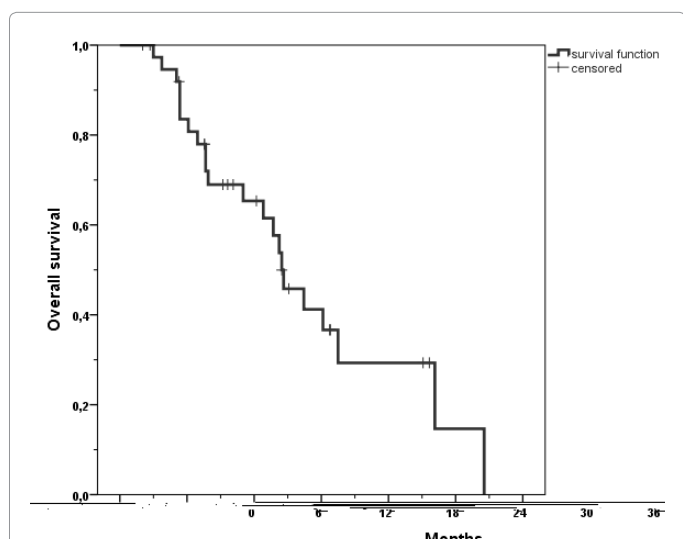
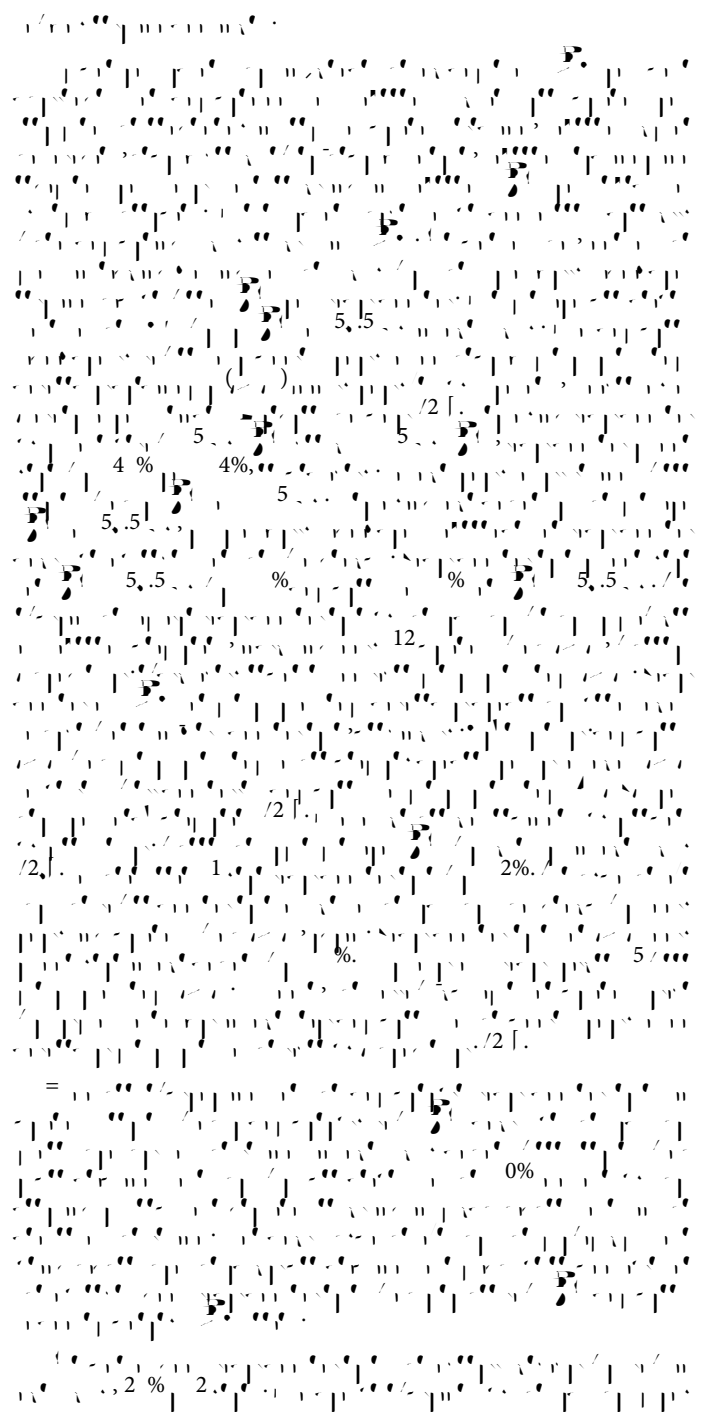


Figure 4a: Actuarial overall survival rate of 33 patients from the start of stereotactic body radiotherapy.



Citation: Sät•c^ÁÜÉÁV:æ~c•&@ÁPÉÁ T^•• { ^:Á TÓÉÁ Yá^@|ÁÜÉÜ:•&@\^Á PÓÉÁ ^cáæ|ÉÁ

11. P^|| { æ } A Ü È Á Y ^ i & @ • ^ j à æ ~ { A Ü Ü i Q F J J I D A U j a * [{ ^ c æ • c æ • ^ • È Á Ô j a } A U } & [| A F H K Á I È F E È