

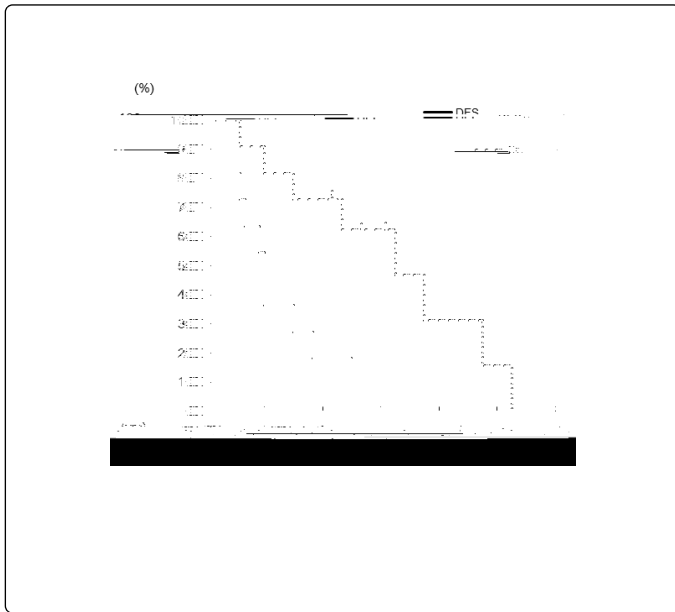
T is

	Recurrence-free group	Recurrence group	P
No. of patients	17	11	
Median age (years)	59.0 ± 13.3 (32-82)	60.8 ± 11.7 (39-83)	NS
Median Duration of Follow up (months)	62.2 ± 32.5 (21-121)	33.5 ± 16.8 (7-63)	0.01
Median DFI (months)	62.2 ± 32.5 (21-121)	13.6 ± 9.9 (0-30)	<0.000
Median Tumor Size (mm)	47.1 ± 27.5 (11-112)	60.9 ± 40.1 (24-155)	NS
No. of dissected lymph nodes	24.2 ± 4.7 (16-32)	28.5 ± 5.3 (22-38)	0.03
No. of positive lymph nodes	18.1 ± 5.1 (11-31)		

References

T e

T e



specific T e

Conclusions

af er

Conf ict of Interest

T e