

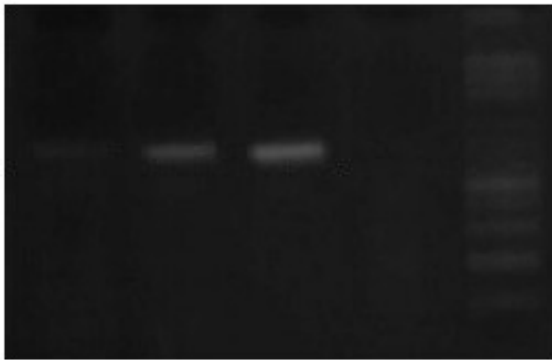
# Diagnostic of Invasive Pulmonary Aspergillosis Using Nested PCR and Culture

Hedhili S<sup>1,2\*</sup>, Souid H<sup>1,2</sup>, Baccouchi N<sup>1,2</sup>, Jemli B<sup>2,3</sup> and Gargouri S<sup>2,3</sup>

1

DNA extraction using charge switch® DNA blood

The second protocol consist to extract DNA using the charge switch  
DNA blood kit®



**Figure 4** Electrophoresis of the first step of nested PCR.



**Figure 5** Electrophoresis of the second step of nested PCR.

## Discussion

Invasive pulmonary infection caused by *Aspergillus* spp. is associated with a very high mortality in immunocompromised patients. IPA usually caused by *Aspergillus fumigatus* [8,12]. *A. fumigatus* was also involved of IPA [8,12]. The diagnosis of IPA is very tardif. It is based on radiological, biological and clinical arguments. An early diagnosis is critical for a successful treatment [1,4].

Following the lack of standardization of PCR extraction and detection technique to detect *Aspergillus* DNA from pathological sampling we have chosen to optimize in house extraction protocol. Extraction with phenol-chloroform appears much

## References