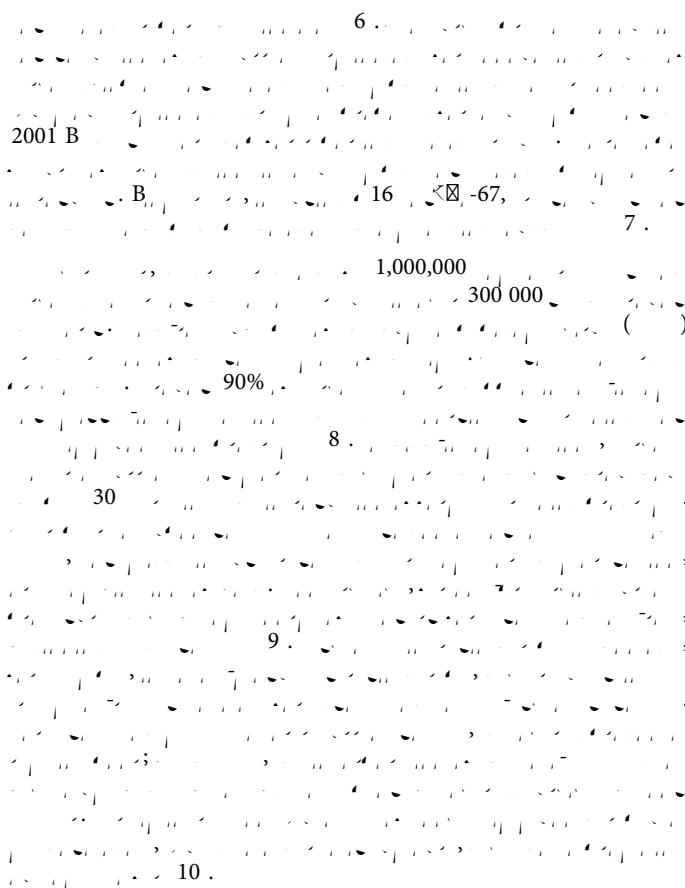


Different Biopsies and Diagnosis of Cervical Cancer Precursors at Colposcopy

Precursors at Colposcopy. Cervical Cancer, 7: 117.

© 2022 Cohen PA. This is an open-access article distributed under the terms of the Creative Commons Attribution License, which permits unrestricted use, distribution, and reproduction in any medium, provided the original author and source are credited.



Acknowledgement

B

Conflict of Interest

No potential conflicts of interest relevant to this article were reported.

1. Harlan LC, Bernstein AB, Kessler LG (1991) Cervical cancer screening: who is not screened and why? *Am J Public Health* 81:885-890.
2. Ö [[áíá ÚRÉÁ Öæ \i}Á SÉÁ Ö [[á@æà^EÖæ^à^!ç RÖÉÁ Ö [íáí] [ÉV[áæ!Á CÉÁ Š^çí}Á ÖÉÁ ^ç al. (2005) Ö [çÉ^ ^&çç^ ^••Á [-Á &^!çí&æ[E&æ} &^!á •&í^!}á} *Áá}Á , ç^!á^ç^! [íá} *Á countries. *N Engl J Med* 353:2158-2168.
3. Ö^ :í&\ARÉÁ Tæ^ íæ}áá T PÉÁÜ [] & [ÁÖÉÁÜ }áá^! •ÁÜÉÁ Y æ!á!^ÁR!çGÉÉÍ Dá New dimensions in cervical cancer screening. *Vaccine* 24:S90-S97.
4. Massad LS, Collins YC (2003) Strength of correlations between colposcopic impression and biopsy histology. *Gynecol Oncol* 89:424-428.
5. T [^ •æçá ÇEÜÉÁÖæ\ [^ íÁÖÉÁÖíæ}áá T T ÉÁÓ^@çæ•@Á PÉÁÖ@æ^ { ç* @æ { áÁÖÉÁ^ç!æ}ÉÁçGÉÉÍ Dá A prospective study to evaluate the correlation between Reid colposcopic index impression and biopsy histology. *J Low Genit Tract Dis* 11:147-150.
6. Hopman EH, Kenemans P, Helmerhorst TJ (1998) Positive predictive rate of colposcopic examination of the cervix uteri: an overview of literature. *Obstet Gynecol Surv* 53:97-106.
7. Ú&@í { æ}Á T ÉÁ Öæ•ç^Á ÚÓÉÁ R^! [] á { [Á RÉÁ Ü [áíá*^•^:Á CÉÁ Y æ&@ [íá^!Á ÚÁ çGÉÉÍ Dá Human papillomavirus and cervical cancer. *Lancet* 370:890-907.
8. S [^ç•\^Á ŠÖÉÁÖæ] [, æ^!Á ÖÉÁ P [[^•Á SŠ!çFJì í Dá