

## Methods

T e

BARBOT's score or POITIER's score	Partials scores	Prognostic profiles=Partial scores +3
Karnofsky's performance scale or Performans status (WHO) >60% 0-1 40 to 60% 2-3 <40% 4	0 2 4	Group A : overall score 0 to 3 Good prognosis Survival at 2 months=92%  Group B : score total 4 to 7 Intermediate prognosis Survival at 2 months=43%  Group C : score total 8 to 10 Poor prognosis Survival at 2 months=8.3%
Number of metastatic sites 0 or 1 2	0 2	
Serum albumin (g/L) 33 24 to 33 <24	0 0	
LDH concentration (UI/L) <600 600	0 1	

T e

T e

The Palliative Prognostic (Pap) score	Partials scores	Prognostic profiles
<b>Anorexia</b>		
Yes	1,5	
No	0	
<b>Dyspnea</b>		
Yes	1	
No	0	
<b>Karnofsky's performance scale</b>		
20 %	2,5	
>20%	0	
<b>Total WBC (cell/mm3)</b>		
8.000 or 8.500	0	
8.000-11.500 or 8.500-11.000	0,5	
>11.000 or 11.500	1,5	
<b>Lymphocytes percentage</b>		
20%	0	
12 to 20%	1	
<12	2,5	
<b>Clinical prediction of survival</b>		
2 weeks	8,5	
3-4 weeks	6,5	
5-6 weeks	4,5	

7-10 week s	2,5	
11-12 weeks	1,5	
12 weeks	0	

T e

T e

**Pallia 10  
scale**

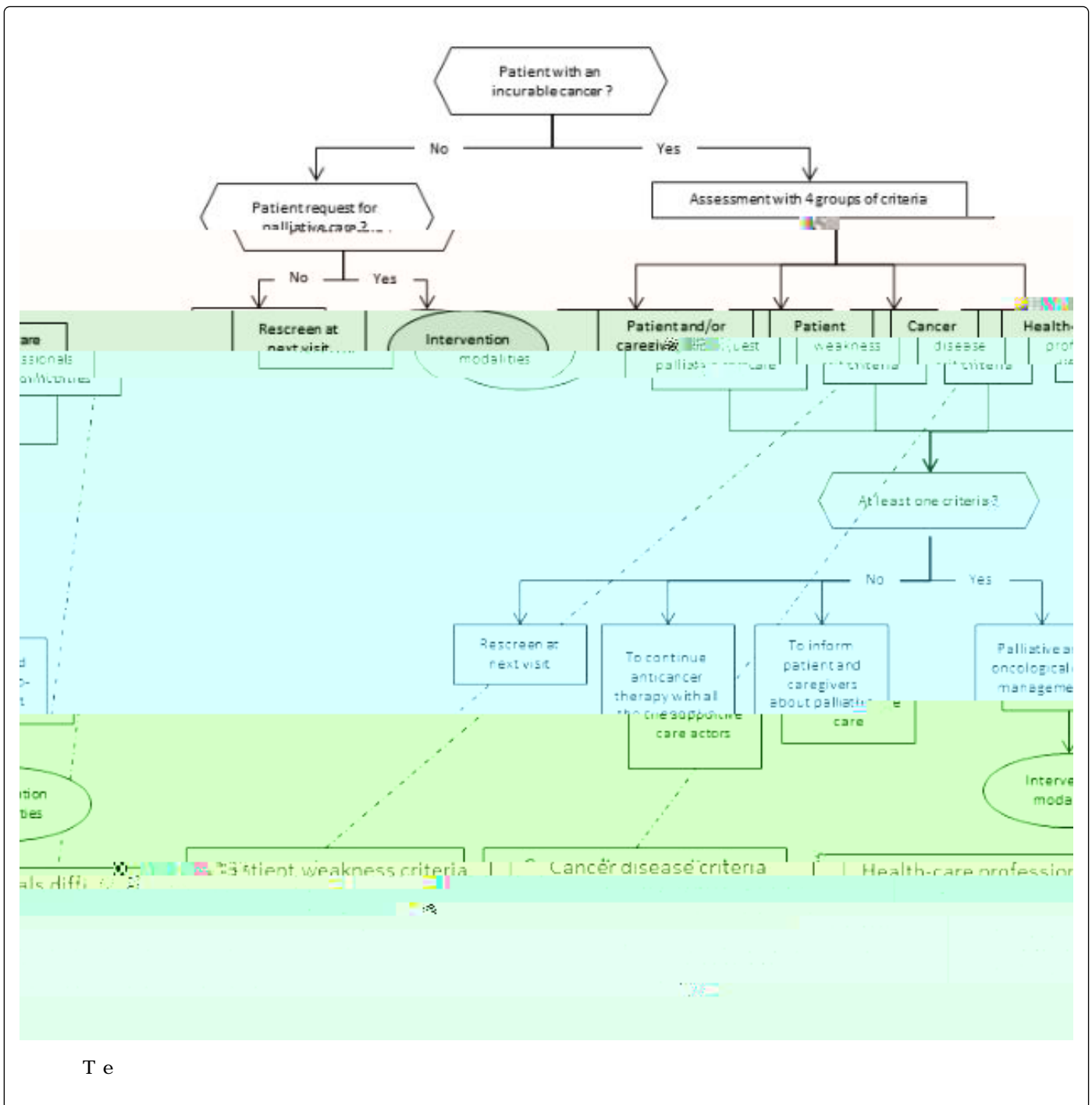
**Questions**

**Object**

**Yes/No**

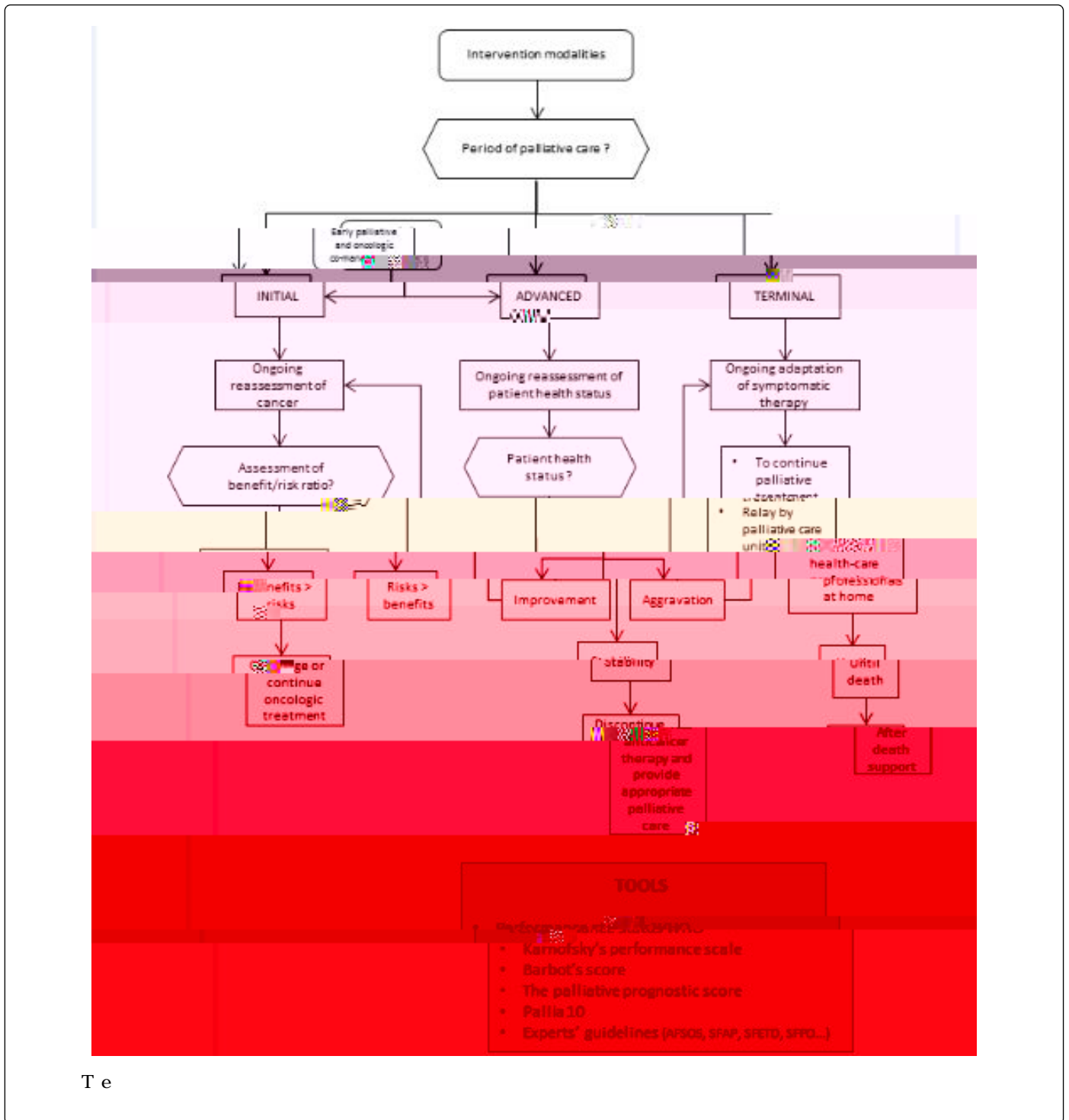
- |   |                                    |   |
|---|------------------------------------|---|
| 1 | Patients with an incurable disease | A positive answer to his question=use pallia 10 scale |
| 2 |                                    |   |





T e

Citation:



T e

Discussion

T is

clarified,

T e

T at

T e

inef cacy



first