

K...: N...; ...; H10...; S...

C

M

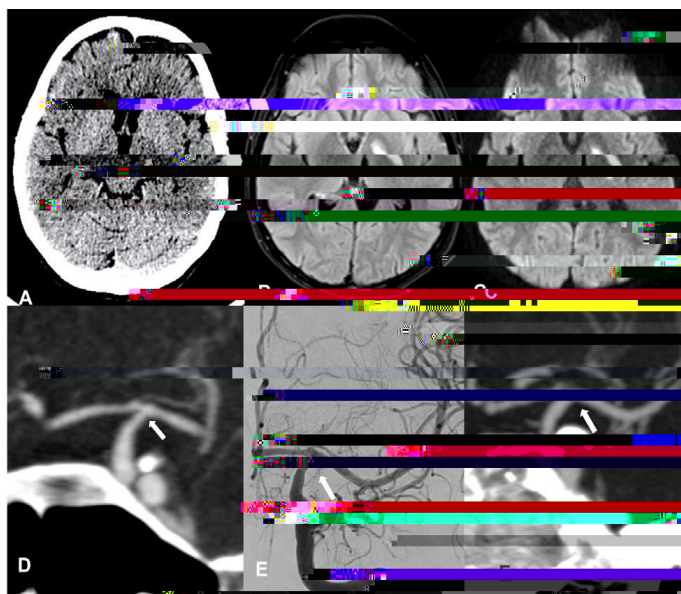
N

A 45-

S

C

(F... 1A)



**Figure 1. A:** Cranial CT scan showing hypodensity compatible with ischaemic lesion affecting the left internal capsule (white arrow). **B and C:** Cranial MRI in

I  
 1,2  
 3  
 3  
 F  
 D  
 C

**References**

1. Ahbeddou N, El Alaoui Taoussi K, Ibrahim A, Ait Ben Haddou EH, et al. (2018) Stroke and syphilis: A retrospective study of 53 patients. Rev Neurol (Paris) 174: 313-318.
2. Cohen D, Shpitalni G, Lifshitz Y, Anani S, Eyal A, et al. (2019) A stroke in the young with surprising recovery. Eur J Case Rep Intern Med 6: 000200.
3. Brightbill TC, Ihmeidan IH, Post MJ, Berger R, Katz DA, et al. (1995) Neurosyphilis in HIV-positive and HIV-negative patients: neuroimaging findings. AJNR Am J Neuroradiol 16: 703-711.