

Morphology of Lignin Analysis Pre-Treatment on Fiber Surfaces after Organosolv

Ottesen Vegar*

Abstract

V@^A!^ââ• [•âcâ [}A [-A]â* }â) Âc [Âc@^A , à^iA -æ&^A æ-c^iA [!*æ } [• [ÇA] !^Èc!^æc { ^ } çA , æ•A •c ~ ââ^âA ~ •â) * Âc , [A ââ ^i^ } çA !^æ&c [!^c ~] ^•ÈA Û^• ~ |c•A-! [{ Âc@^A& [} Ç^] çA [} æ]æ~c [&]æÇ^A!^æ&c [!A ~ * * ^•cAç!^æââ• [•âcâ [} A [&& ~ !•A â~ !â) * Âc@^A& [[]â) * A â [, } A •cæ*^ÈA Û^â^ [•âcââ] æc@^A æ] ^æ!^âA c [A â^A *] [à ~] æ!A â) A •@æ] ^ÈA V@^A •â: ^A æ } âA [[] ~] æcâ [} A Çâ& [•âc^A [-A c@^A] æc@^A •A â^] ^ â•A [] Âc@^A æcc^] çA [} A [-A [!*æ } [• [ÇA]â* }â) Âc@^A & ~ ââ) ^A]â ~ [!ÈA , @â&@A ââ@æ! { []â [~ •A , âc@A c@^A c@^A •ââ c@æç!^] !^ââ] âcæcâ [} A [-A]â* }â) A [&& ~ !•A , @^] Âc@^A •c^ { Aâ•A& [[!^ââ [, } ÈA V@^A ~ ^A [-A æA!^i^ æçâ [} A!^æ&c [!A •@ [, ^âAç!^æçA ââ]] æ&â) * Âc@^A •] ^ } çA [[]â) * A]â ~ [!A , âc@A-!^•@A& ~ ââ) ^A]â ~ [!A!^â ~ ^âAç!^A!^] !^â@^] •Aâ) A!^â ~ &â) * Âc@^A!^ââ• [•âcâ [} Aæ) âAç!^æâââcâ [} A [-AæA æ•@â) * A •cæ*^A , âc@A-!^•@A& ~ ââ) ^A]â ~ [!A!^â ~ ^âAç!^A!^] !^ââ] âcæcâ [} A [-A]â* }â) ÈA] æ!çâ& ~] æ! [^A [] Âc@^A ^çc^! } æ]A , à^iA •@^] ÈA Û^â^ [•âcâ [} A [-A]â* }â) A , æ•A •câ]A [â•A!ç^ââ [} A!^A *â [] •Aç!^æçA , ^i^A!^•A æ&&^••ââ!^Aç [A , æ•@â) * A]â ~ ââÈA •â { â]æ!Aæ•A , à^iA

Ô}çâ! [] { ^ } çæ]A Ô } *â) ^A]â) * ÈA V]â } âc^A Ô [[] ^•A ÈA B [! , æ^ÈA ÔÈ { æ]KAX^ æ! [cc^•^] O * { æ]È & [{

Received: 1 ÈcE ~ * ÈGÈGGÈA T æ } •&]â] çA B [Kââ•@ÈGGÈTGGFGÈA **Editor assigned:** A T ÈcE ~ * È GÈGGÈA Û!^A ÛÔâB [Kââ•@ÈGGÈTGGFGAÇÛÛDÈA **Reviewed:** GÈÈcE ~ * ÈGÈGGÈA ÛÔâB [Kââ•@ÈGGÈ TGGFGÈA **Revised:** A GÈÈcE ~ * ÈGÈGGÈA T æ } •&]â] çA B [Kââ•@ÈGGÈTGGFGAÇÛÛDÈA **Published:** HÈÈ cE ~ * ÈGÈGGÈA ÛÛKAFÈÈ] F T Çââ•@ÈFÈÈÈFGI

Citation: X^* æ!A ÛAÇGÈGGDÁ T [!] @ [[[[^ [-A Sâ* }â) ÂcE] æ] ^ •ââ Û!^ÈV!^æc { ^ } çA [] A Çââ^iA Û~!^æ&^Aæ-c^iA Û!^æ } [• [ÇÈA Ôâ [] [! { ^!^A Û^A!^KAFÈÈ

Copyright: A î ÁGÈGGAX^* æ!A ÛÈA V@â•Aâ•Aæ } A [] ^ Èæ&&^••Aæ!çâ!^Aââç!ââ ~ c^ââ) â^iAç!^A c^! { •A [-A c@^A Ô!^æç!^A Ô [{ [] •A Ècc!ââ ~ çA [} A Sâ&^] •ÈA , @â&@A] ^! { âc^A ~ } !^•c!âc^ââ ~ •ÈÈââ•ç!ââ ~ çA [} ÈAæ } âA!^] ! [â ~ &câ [] Aâ) æ } A { ^ââ ~ { ÈA] ! [Çââ^âAç!^A]â) æ]æ~c@ [!^æ } âA • [~ !^Aæ!^A&!^ââç!^È

c. F. a. c. c. a. a.
d. F. a. / a. b. a.
d. 52. a. d. a. Ga.
a. a. c. I. a. d. c.
A. d. a. a. d. c. a.

Image analysis

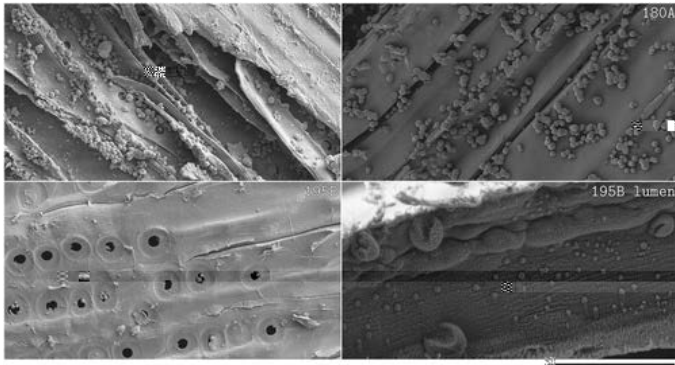


Figure 4: Scanning electron micrographs (SEM) showing the morphology of fiber surfaces after organosolv pre-treatment. The images are arranged in a 2x2 grid. The top-left image (180A) shows a smooth fiber surface. The top-right image (180A) shows a fiber surface with small, dark, irregular particles. The bottom-left image (195B) shows a fiber surface with several circular pores. The bottom-right image (195B lumen) shows a fiber surface with a central lumen and a rough, textured appearance.

