

(2. %), (0. %), (36. %) (13. %). (1) (1).

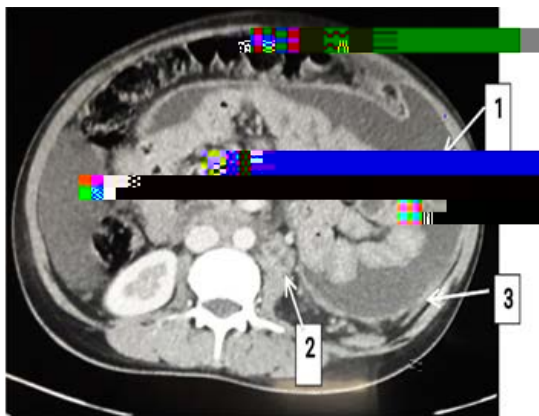


Figure 1: Axial CT scan of the abdomen showing findings labeled 1, 2, and 3.

CTF	N . Pa ()	P a (%)
	32	2.
	1	0.
	16	36.
	1	30.
		20.
		1 .2
		11.
		11.
		.1
	3	6.
	3	6.
	2	.
		.
	2	.
	2	.
	2	.6
	1	2.3

11. (0-100%) 1-1

(0-0%) 1-1

0-60% 1-16

(2002, 2:3)

() (%)

(26%)

(13%)

(13%)

3 - 0%

(0%)

(36. %)

(10. %)

(.2%)

(2. %),

(0. %), (36. %)

(13. %).

1

- 2% 1, 10, 1

(1-3)

1-1

1

C

()

()

R

1. (200) 1-6 - 1.
2. (200) 31-10
3. (200) 1, 2006. 6-10, 0-
- (2010) 1-1226-32.
- (200) 3(6)6 1-
6. (2010) 1-1 1.
- (200) 1, 3-200. 10
- (200) 6
- 10(1,)
- 336 1- 0
- (1,) 20-3 -
- (200) 10 0
- 131-6.
- (2010) 10- 3-3 00.
- 1 .

16-17-63.

1. (201)

1. (200) .6() 0 - 0

13(3):133-
